

THE COLLISION OF AGRICULTURE, ENVIRONMENT, PUBLIC HEALTH, AND SCIENCE: NR 151

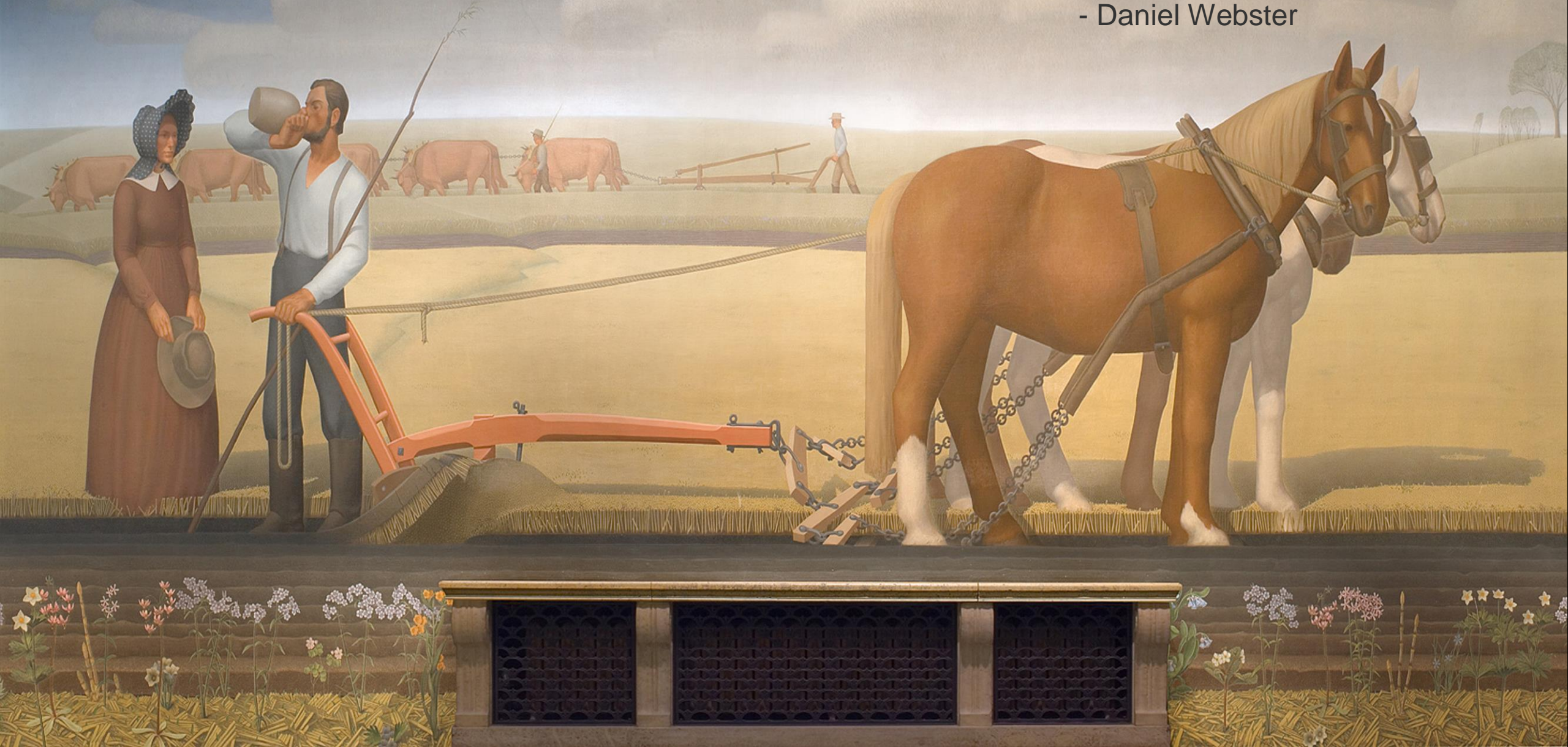
An Unprecedented Collaboration to Protect
Groundwater Quality in Eastern WI

Jim VandenBrook, Executive Director

WI Land+Water

When tillage begins, other arts will follow.

- Daniel Webster





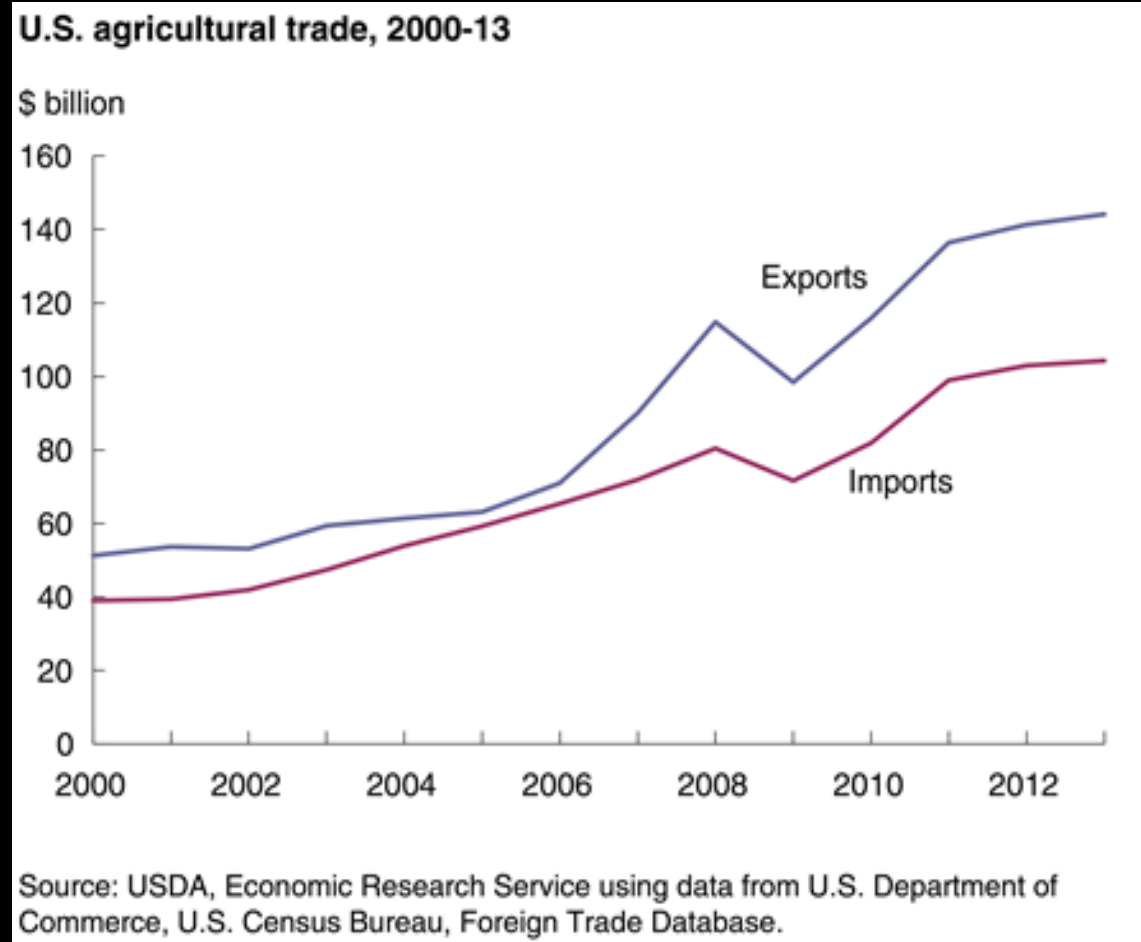
FEEDING WISCONSIN



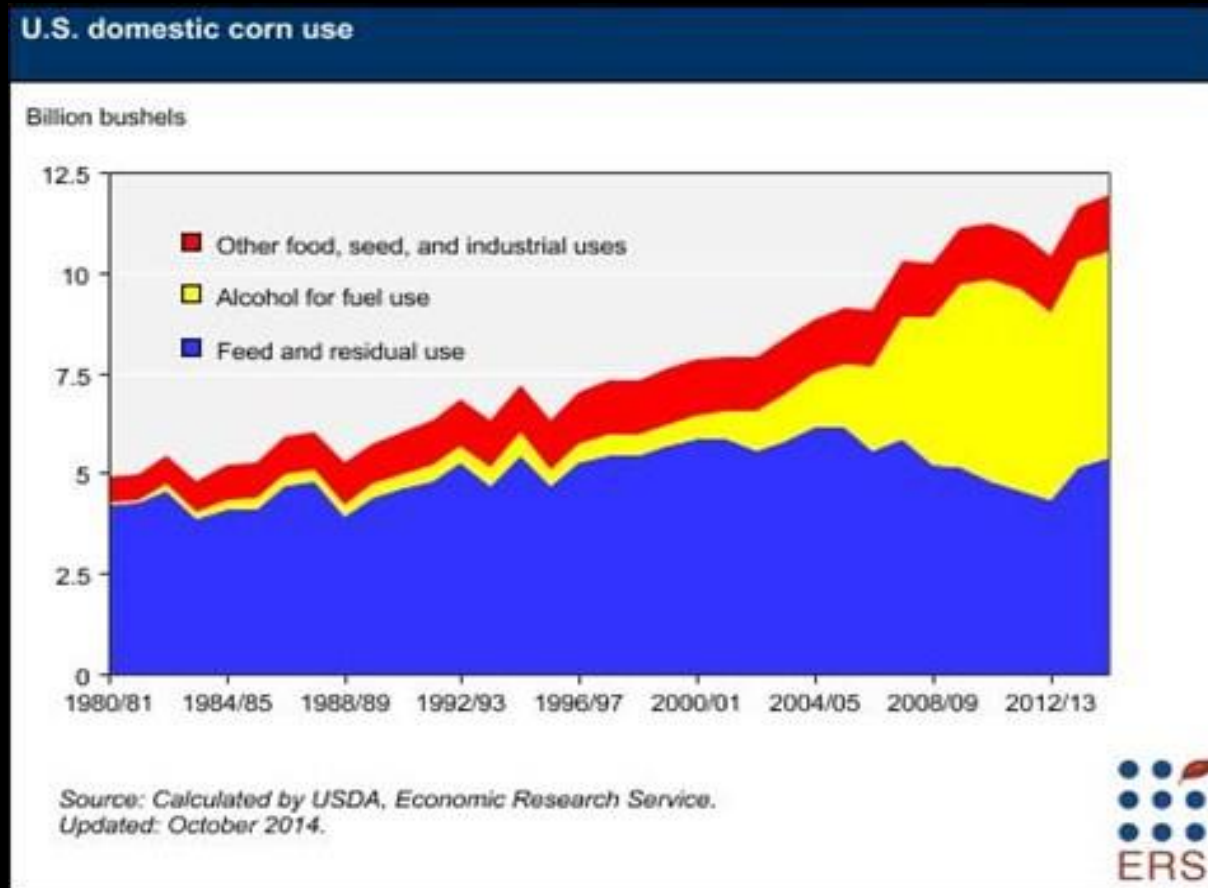
Wisconsin consumes (or wastes) 30 million pounds of food *every single day*.

Photo courtesy of Jasper Greek Golangco (via Wikimedia Commons)

TRADING FOOD



PEOPLE, LIVESTOCK AND CARS

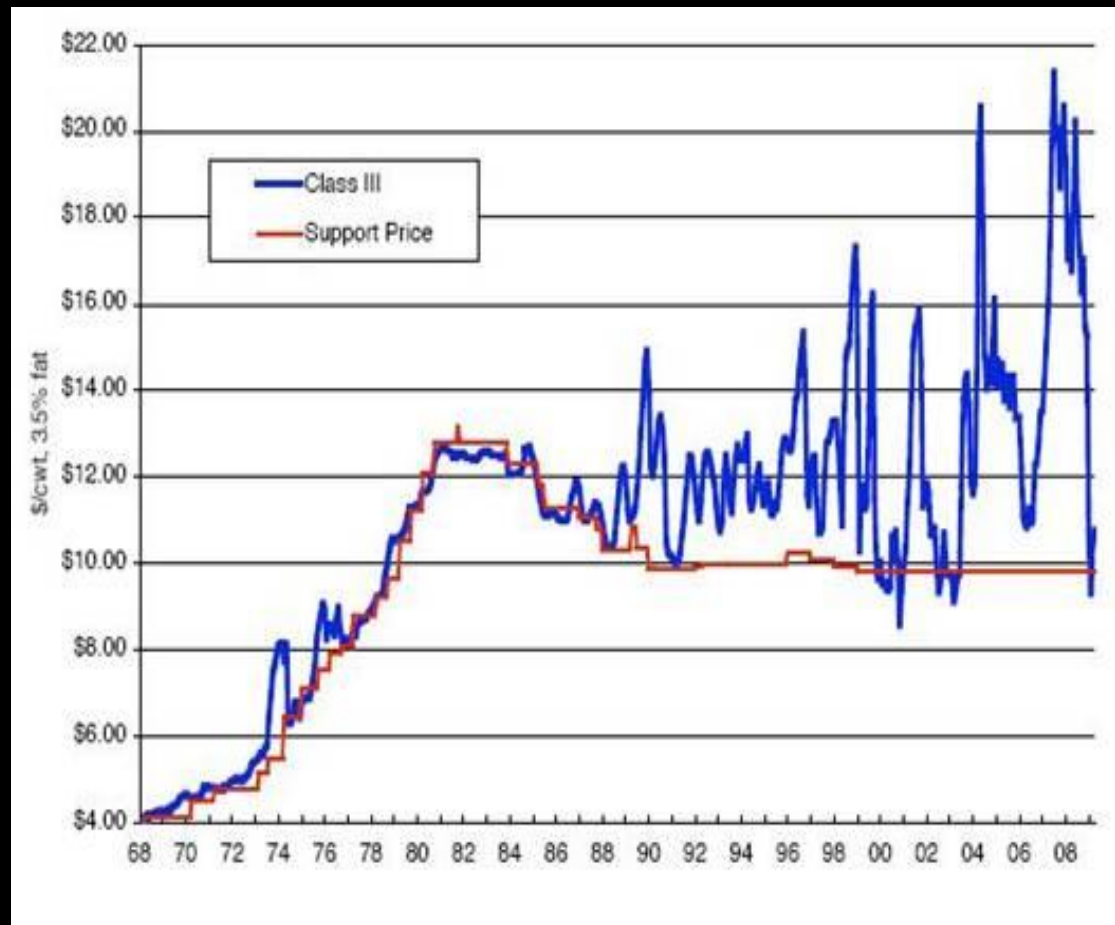


THE BIG CASINO

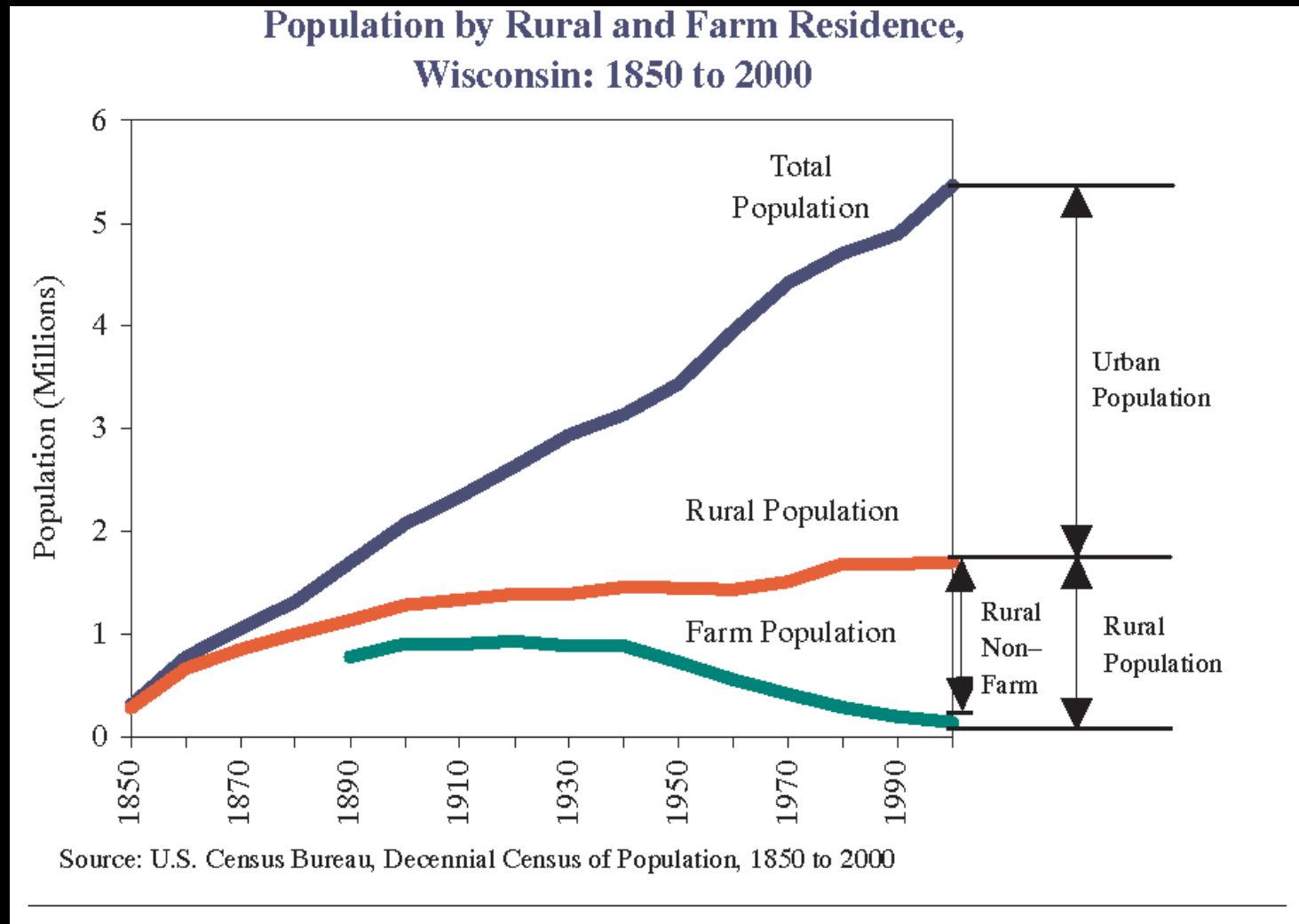
VOLATILE WORLD COMMODITY MARKETS

DAIRY PRICE TREND (1968-2008)

CHART: CORNELL UNIVERSITY REPORT

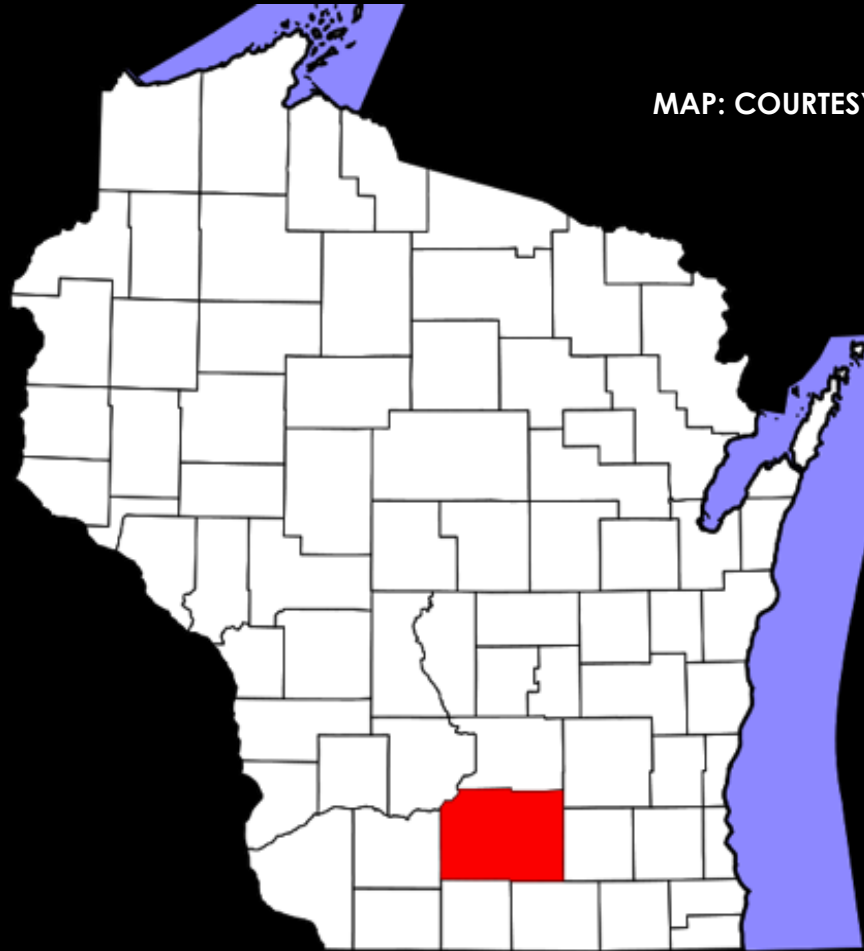


FEWER, LARGER FARMS



WISCONSIN FARMLAND LOSS

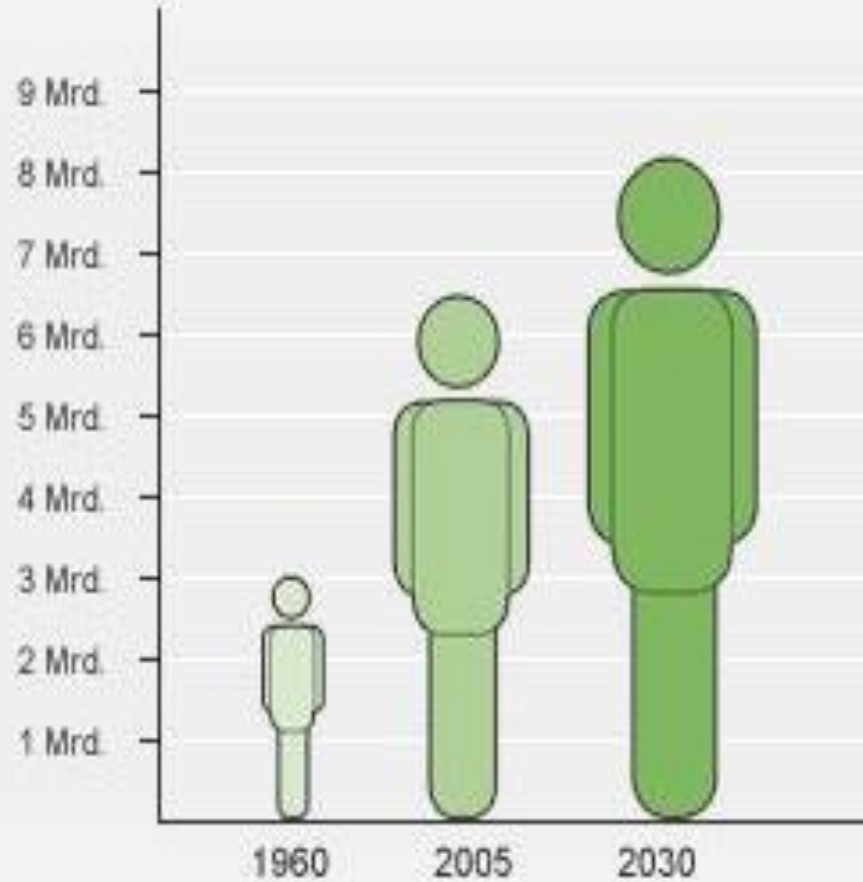
MAP: COURTESY OF DAVID BENBENNIK VIA WIKIMEDIA COMMONS



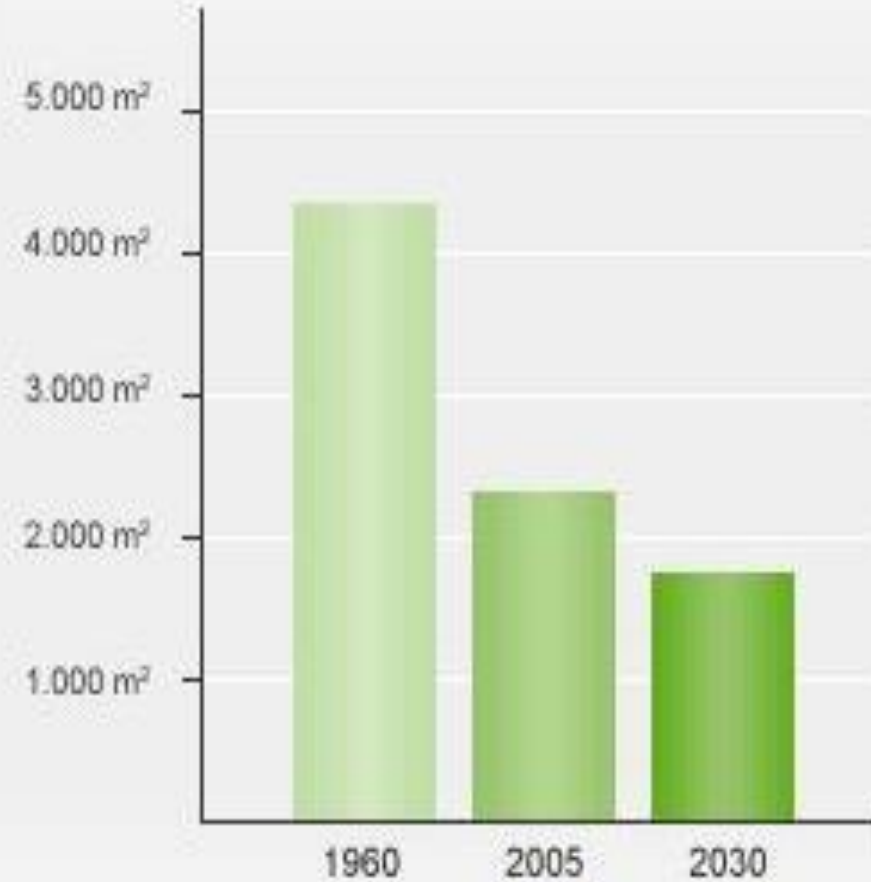
FOOD AND LAND

CHART: UNITED NATIONS FOOD AND AGRICULTURE ORGANIZATION (FAO)

World population growth



Arable land per capita



Trade-off

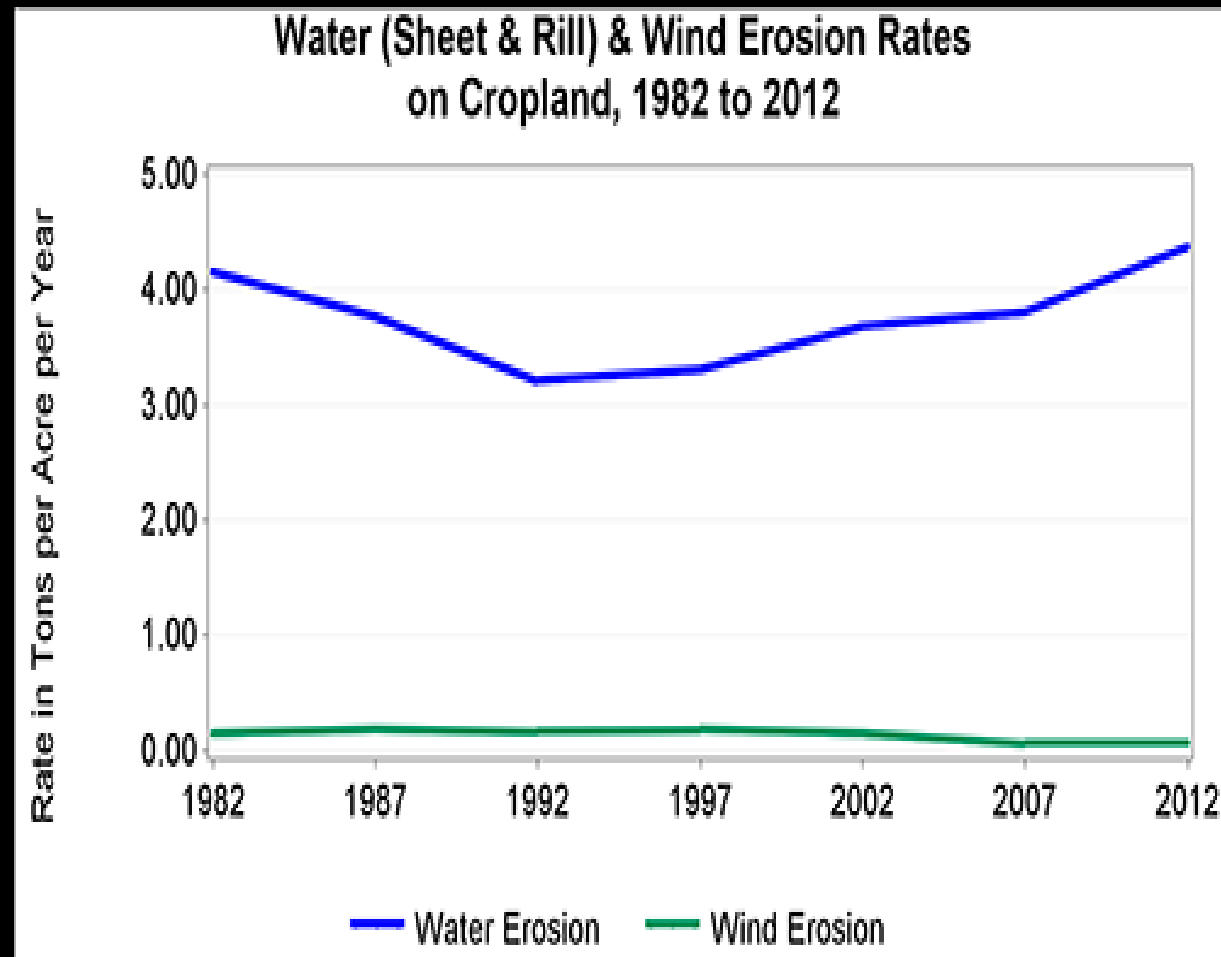


Water flows in the Kilbourn Road Ditch just south of Braun Road and east of I-94 in Mount Pleasant. The ditch, or stream, runs north-south in the general vicinity of where the Foxconn Technology Group will likely construct a large industrial plant. Foxconn will be exempted from state environmental requirements other companies would have to follow. MIKE DE SISTI / MILWAUKEE JOURNAL SENTINEL

State no longer leads in conservation

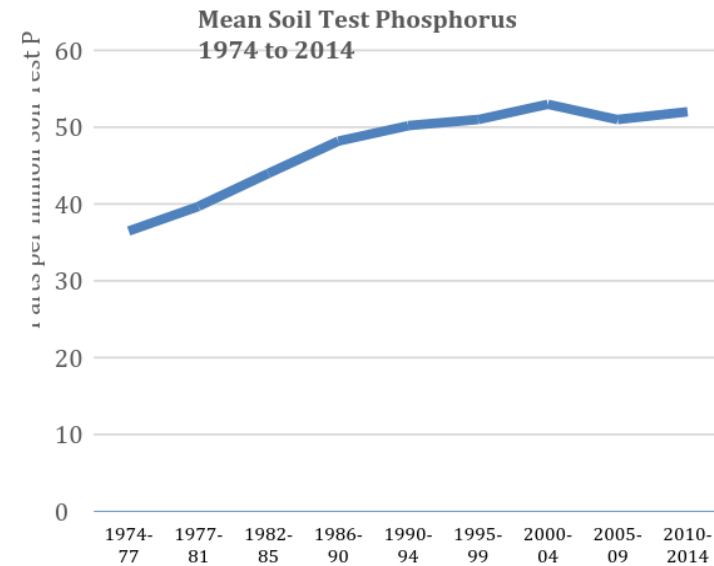
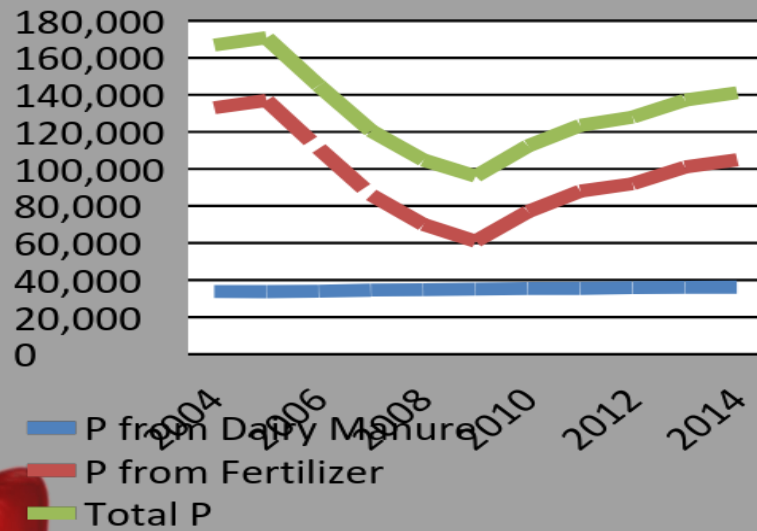
Lee Bergquist
Milwaukee Journal Sentinel

EROSION & WATER TRENDS

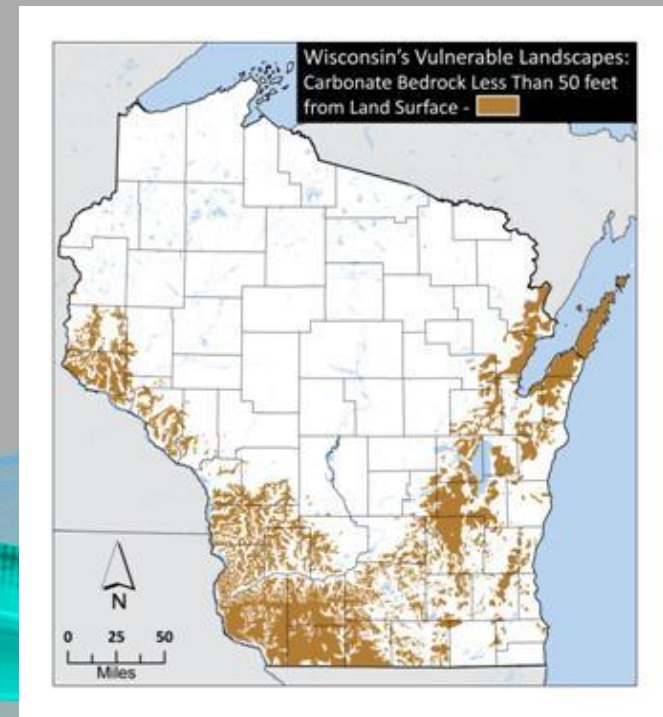
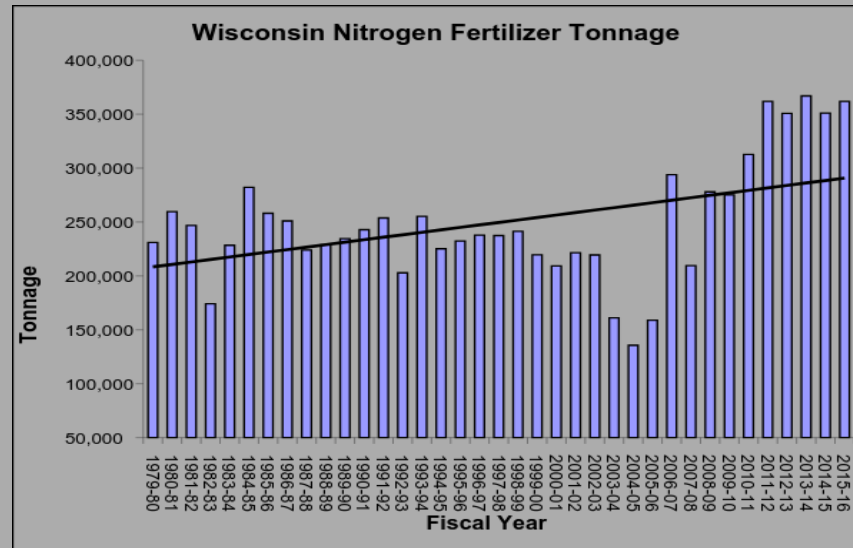
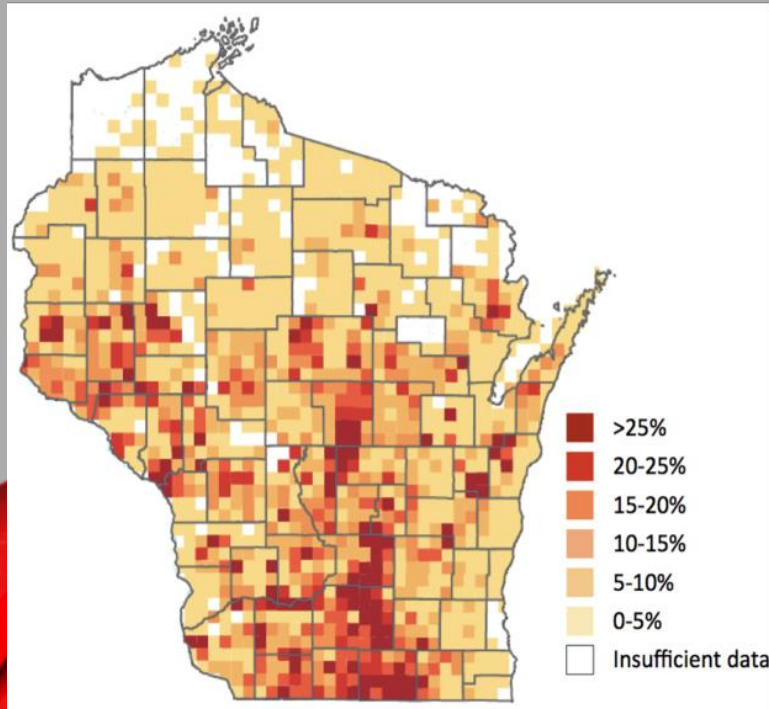


SURFACE WATER QUALITY PHOSPHORUS

**Tons of Phosphorus Applied
on Wisconsin Farms (2004-14)**



GROUNDWATER QUALITY N & PATHOGENS



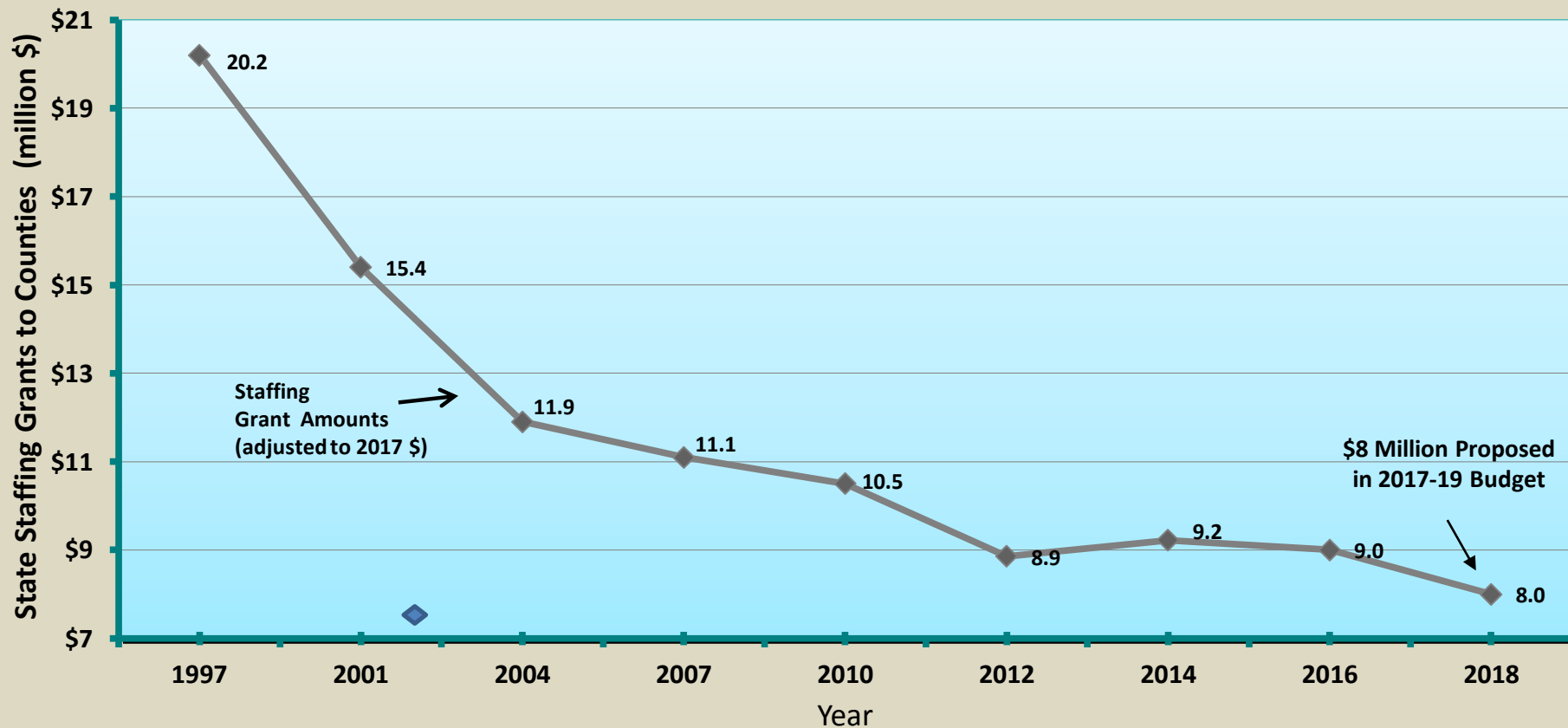
GROUNDWATER QUANTITY



THE STATE COMMITMENT TO LAND AND WATER CONSERVATION: A 20 YEAR SLIDE

Figure 1

Annual State Grants for County Land Conservation Staff 1997 - 2018



BUT FINALLY - ENOUGH IS ENOUGH



NEW AT 5:00

WBAY-TV 2

LIQUID MANURE APPLICATION ORDINANCE



Marinette

7pm
17 P Cloudy

10pm
16 Clear

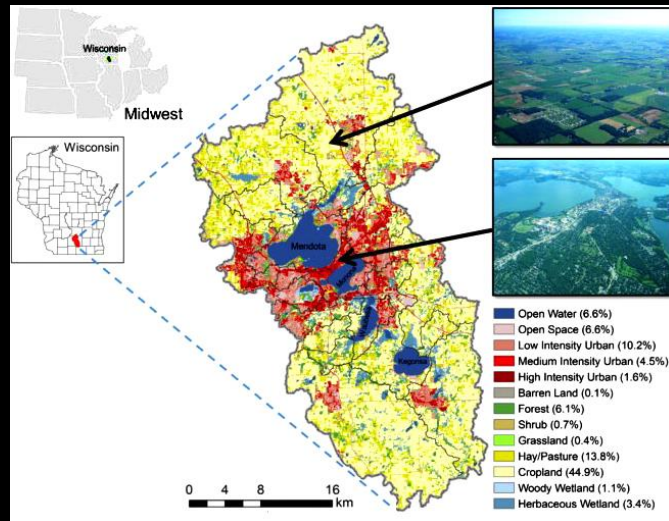
7am
13 Sunny

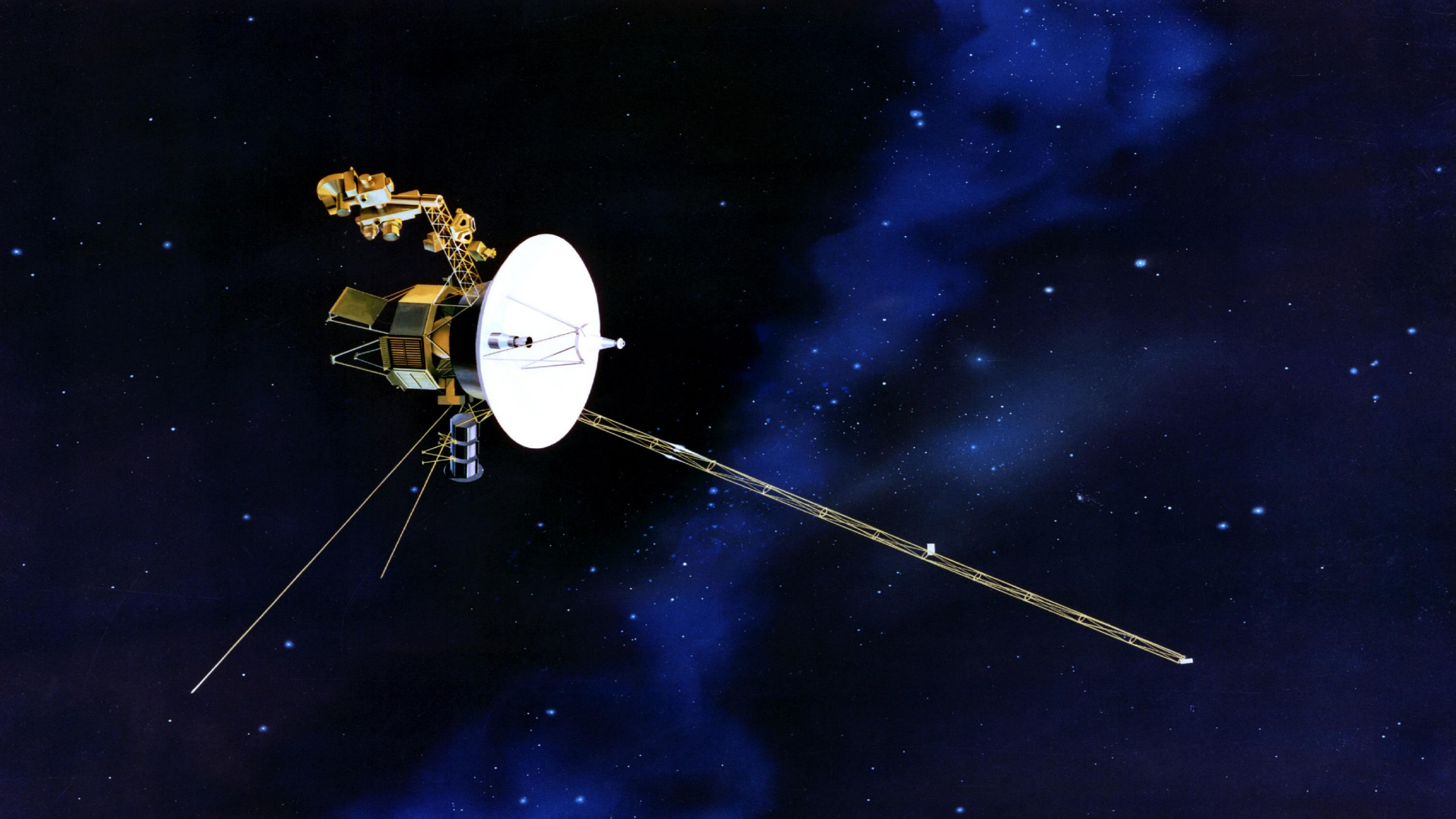
NR 151 – CRITICAL MASS ACHIEVED!



THE FOOD, LAND AND WATER PROJECT

Opportunities







Don't Think Small

