

Using geophysics to better understand wetland hydrogeology

David Hart¹, Jack Borski², Kylie Larson-Robl², Aaron Pruitt³, Maureen Muldoon², Kenneth Bradbury¹



UW
Extension

Wisconsin Geological and Natural History Survey

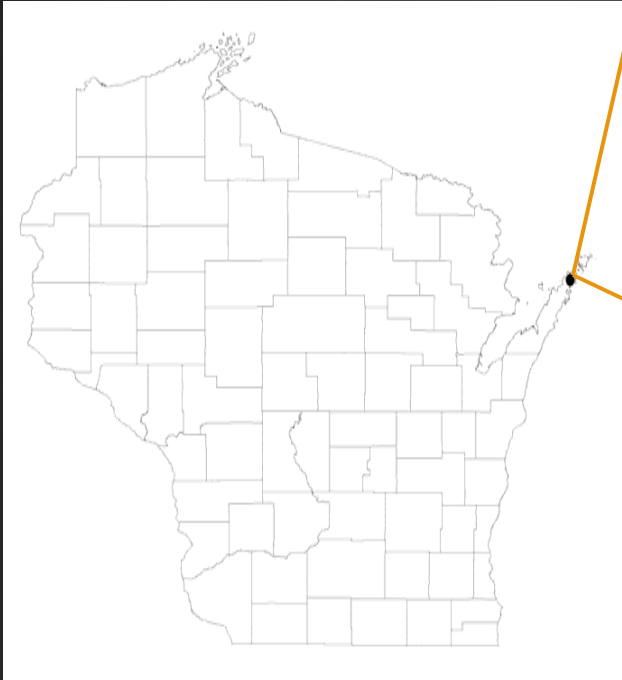
uw oshkosh
Geology
A University of Wisconsin System
Center of Excellence for Undergraduate Geology.



DEPARTMENT of
GEOSCIENCE
University of Wisconsin-Madison

 **WISCONSIN COASTAL
MANAGEMENT PROGRAM**

Site Location



Geophysics is often a good choice for wetland studies

- ⊗ Flat
- ⊗ Often no trees or other obstructions
- ⊗ No “cultural” interference
- ⊗ Equipment is relatively portable and unlikely to become stuck



Photo - Ken Bradbury

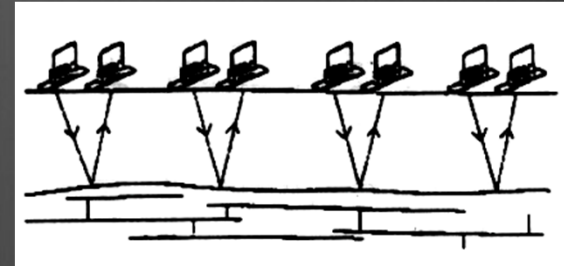
Geophysics is often a good choice for wetland studies

- ⊗ Flat
- ⊗ Often no trees or obstructions
- ⊗ No “cultural” interference
- ⊗ Equipment is relatively portable and unlikely to become stuck

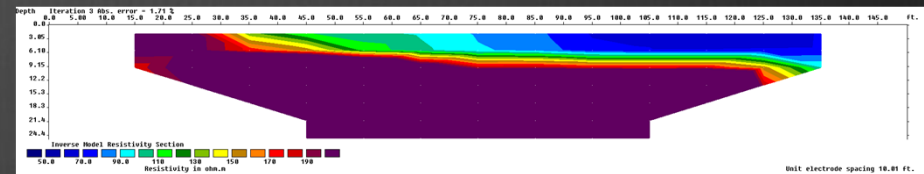


Geophysics Used

⦿ Ground Penetrating Radar



⦿ Electrical Resistivity Imaging

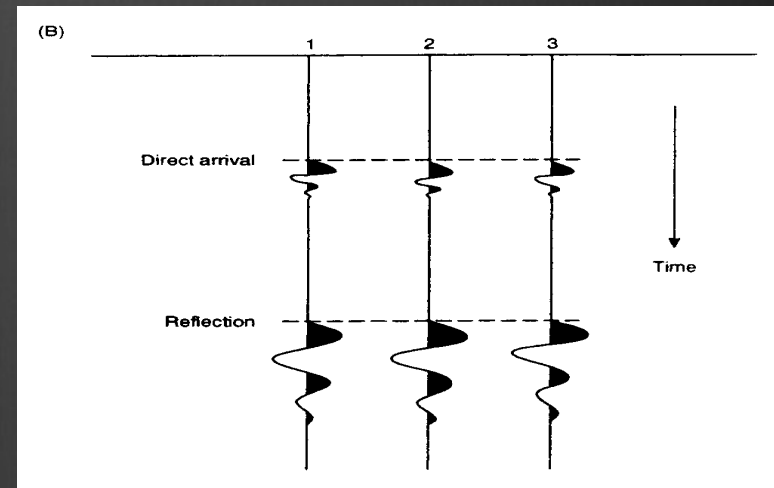
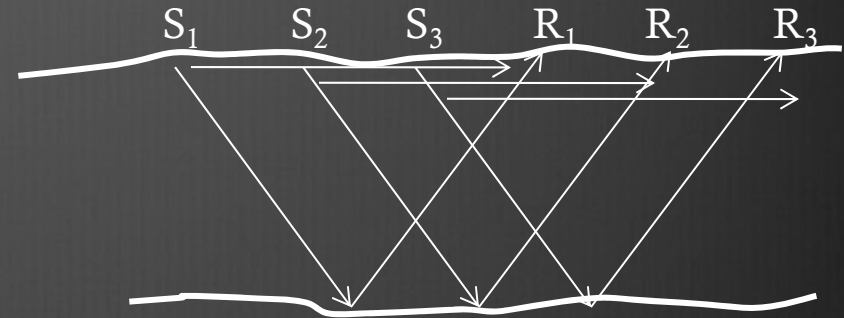


⦿ EM-31 Ground Conductivity Meter



RADAR

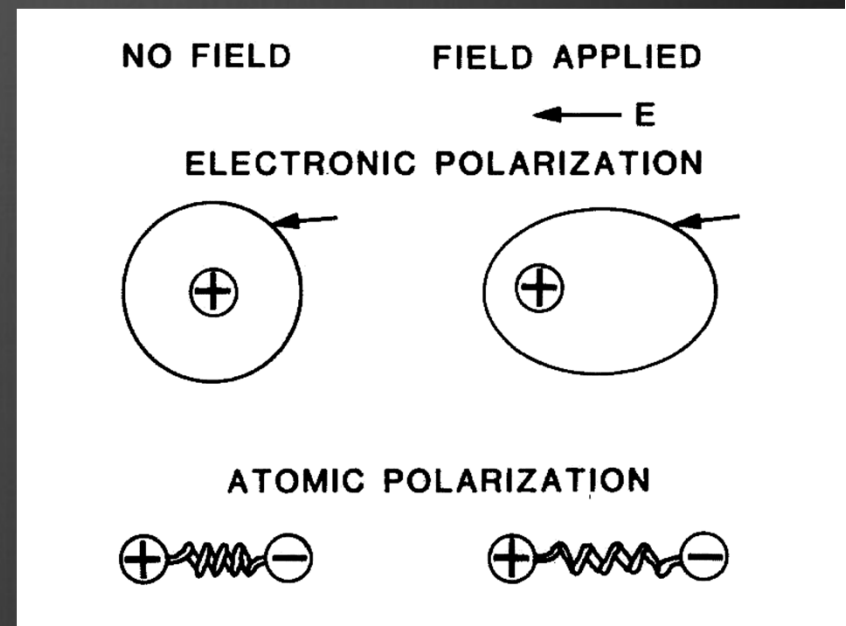
- ❶ Radio Detection and Ranging
- ❷ Developed in 1940s
- ❸ Basic Principle
 - ❶ Send out a radio wave pulse
 - ❷ Then look for reflections
 - ❸ The first part of the record is a direct wave (usually includes an air wave too)



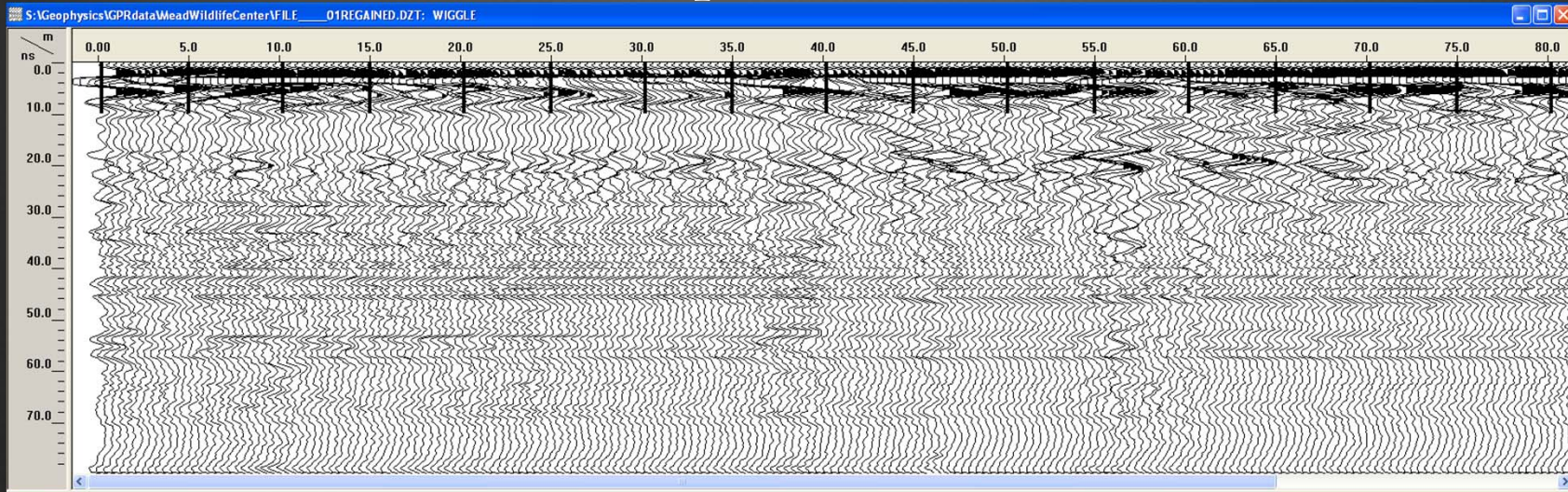
Reynolds

Radio (EM) waves travel through earth.

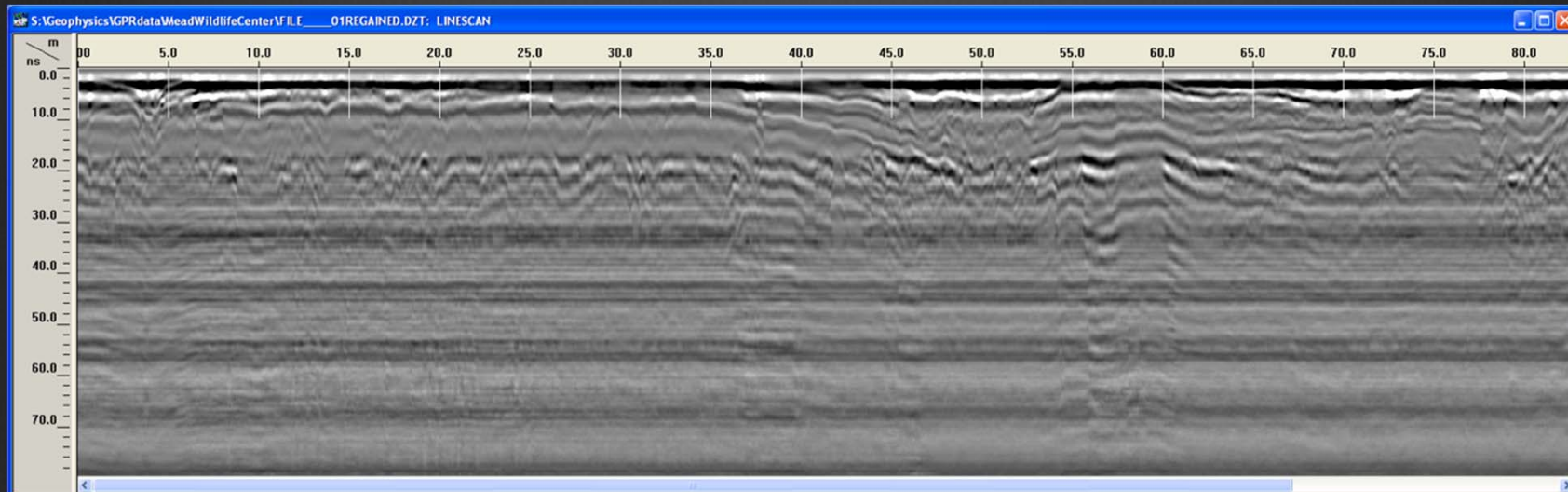
- The waves stretch the electron clouds around atoms and create dipoles.
- Easily stretched dipoles (high dielectric constants) have low velocities (water).
- Good conductors allow the electrons to move from atom to atom. That current takes all the wave energy. Can't see deep into conductors like metals or clays.
- Couldn't use GPR in the Bog proper



View data as a series of amplitude traces over distance ...

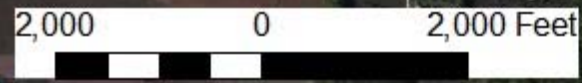


or as an intensity plot with distance.



Mink River GPR

GPR Lines 11, 12, and 13



bing™

Image courtesy of USGS © 2012 Microsoft Corporation © 2010 NAVTEQ © AND

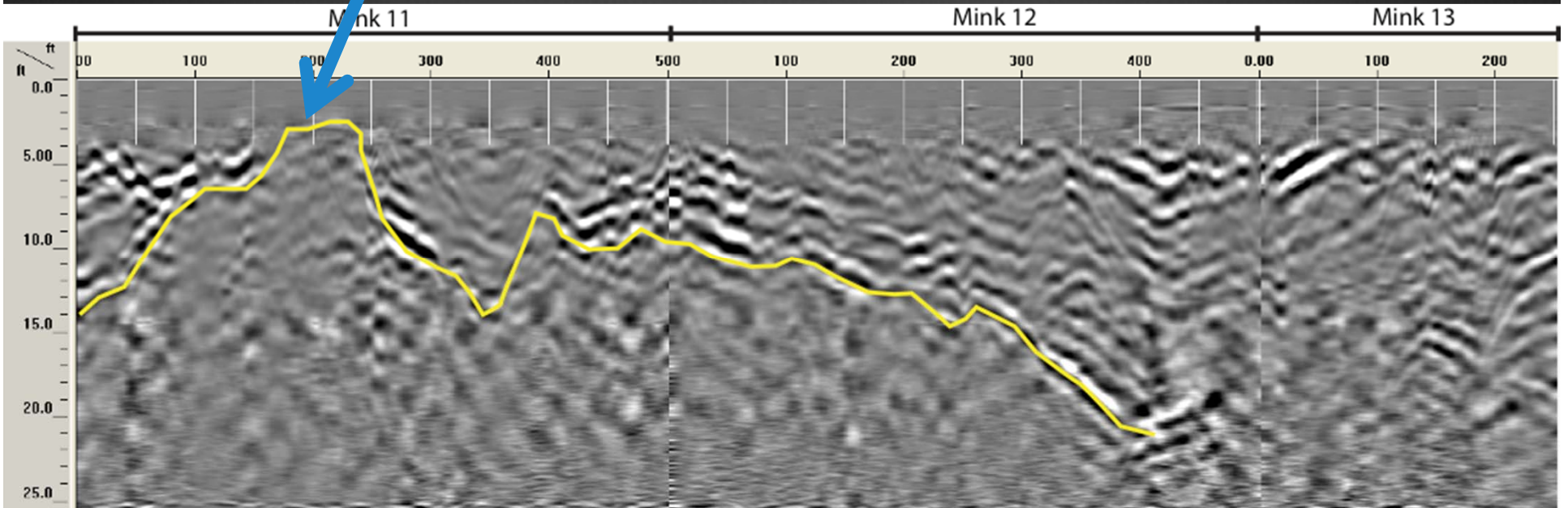




GPR Results



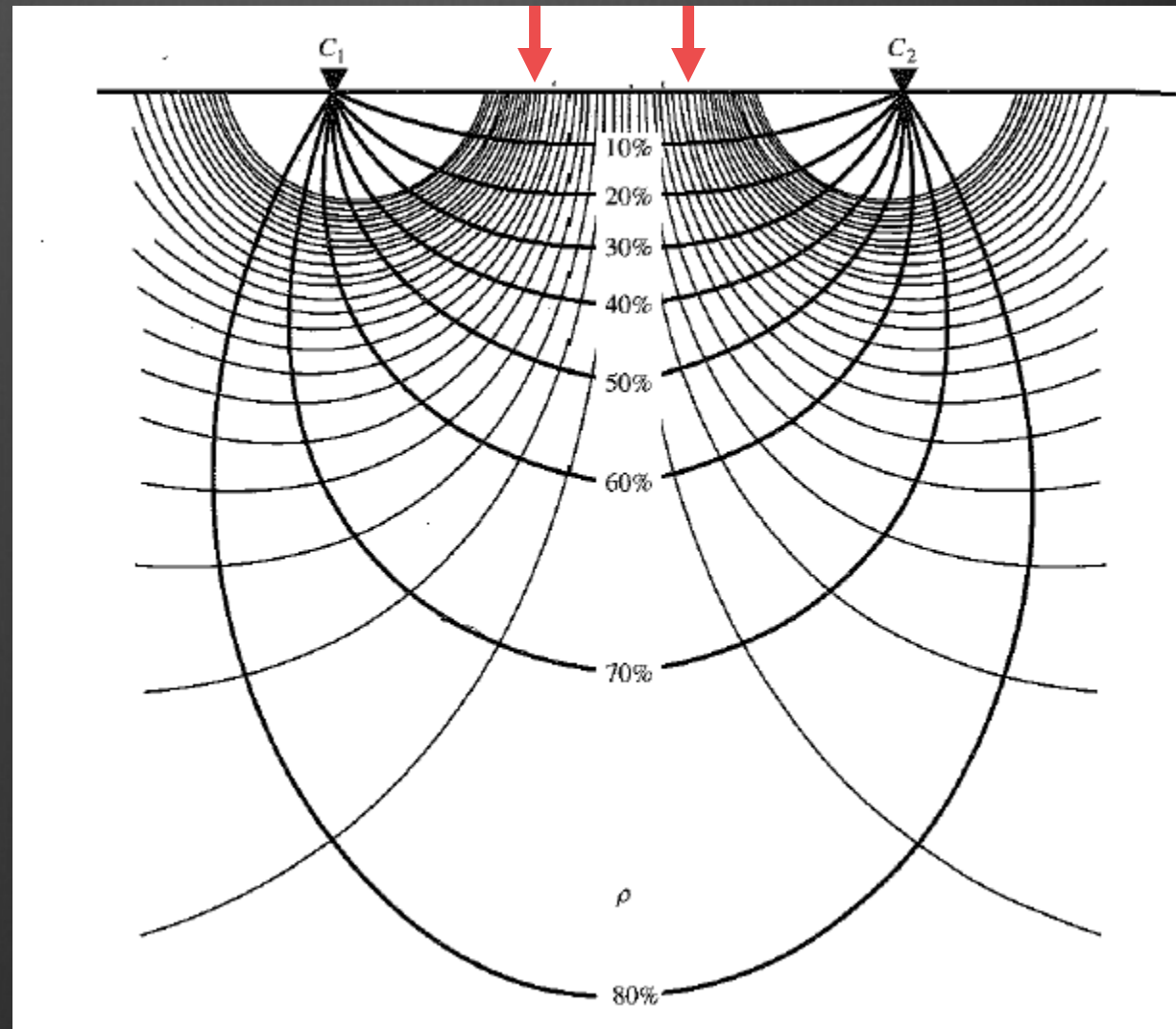
Reflector comes to the surface



Electrical Resistivity Imaging

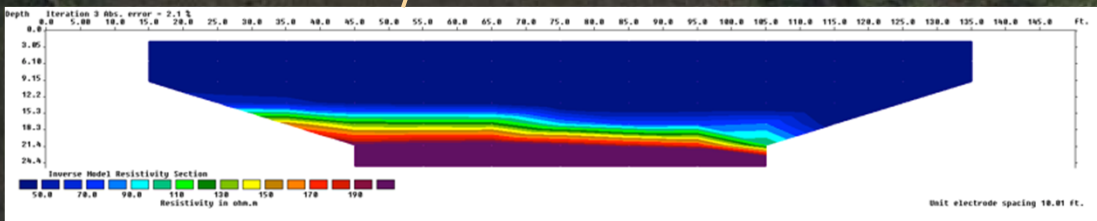
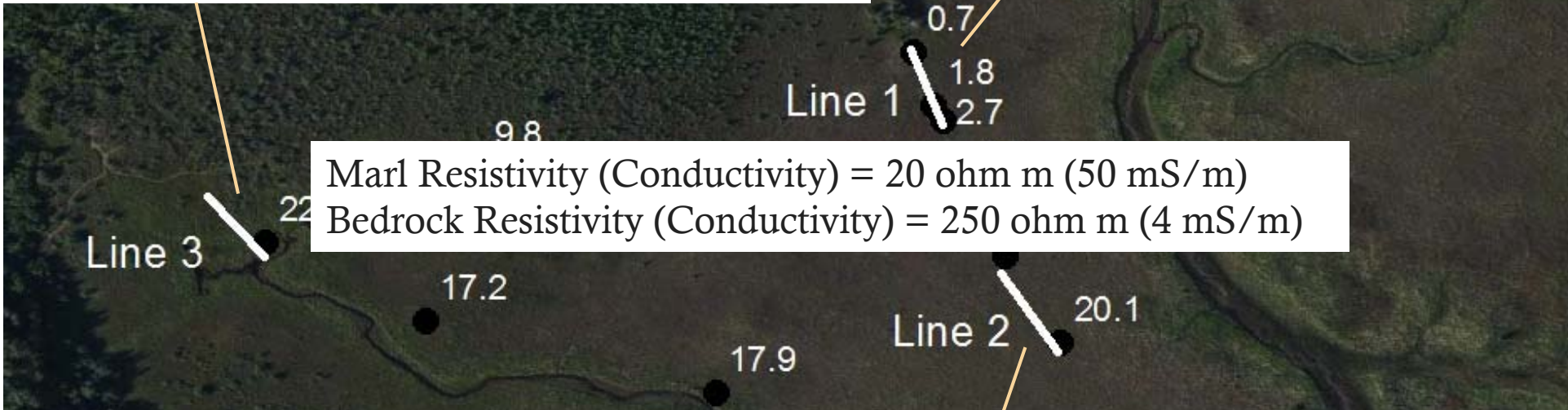
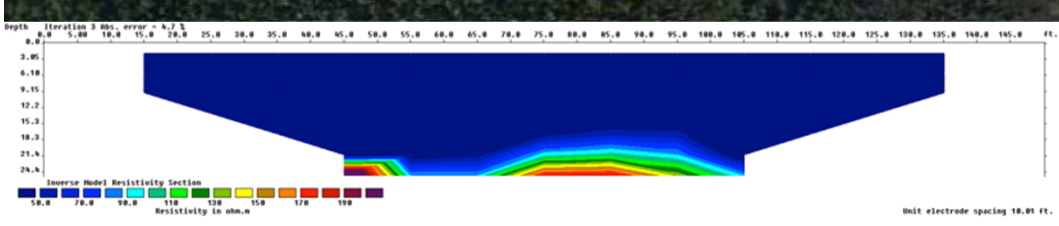
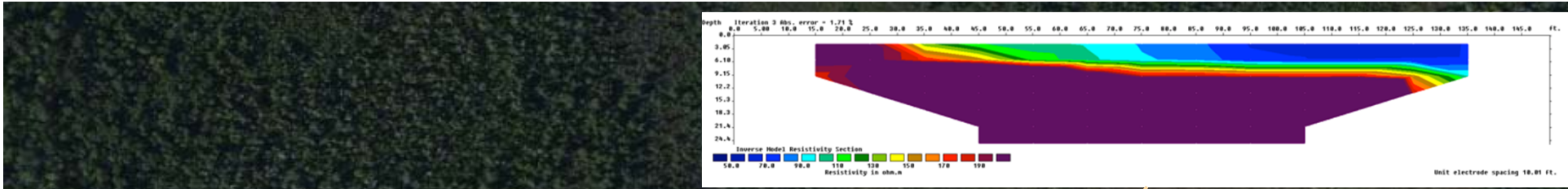
Current In Voltage 1 Voltage 2 Current Out

- ⊗ Analogous to groundwater flow
- ⊗ Current electrodes like injection and pumping wells
- ⊗ Voltage electrodes like piezometers
- ⊗ Get electrical conductivity rather than hydraulic conductivity
- ⊗ Variations in materials cause flow lines to warp that can be seen in the voltages.
- ⊗ Multiple sets of electrodes allow tomography of subsurface.

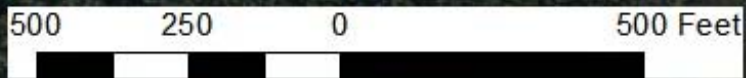








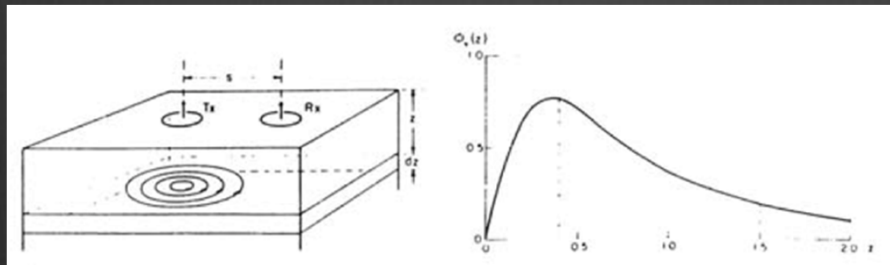
Depth to rock (push/core) ft



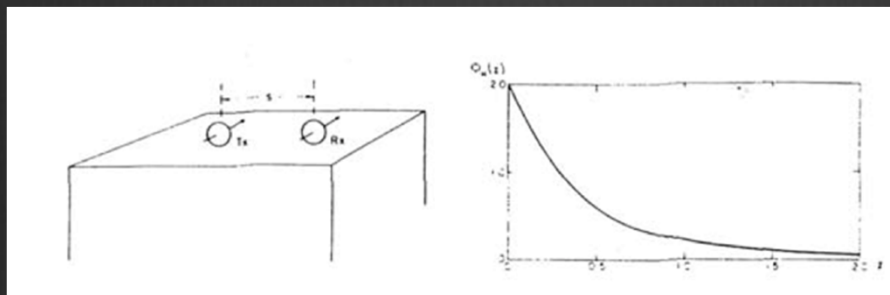
EM-31 Operation

- Operating Principle
 - Instrument induces electrical current in earth with alternating current in coil in one end of instrument. (No direct contact with ground)
 - Coil in other end senses the current in the earth.
 - More induced current → Better conductor
 - Changing Coil orientation → changes depths sensed

Vertical

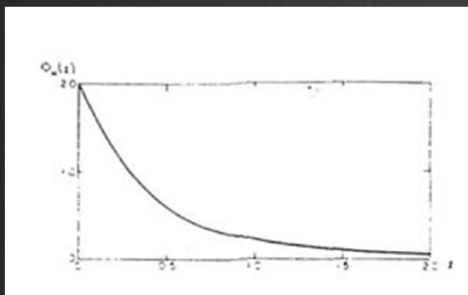
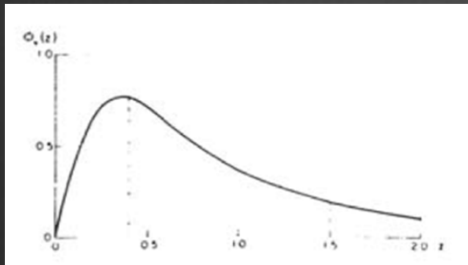


Horizontal

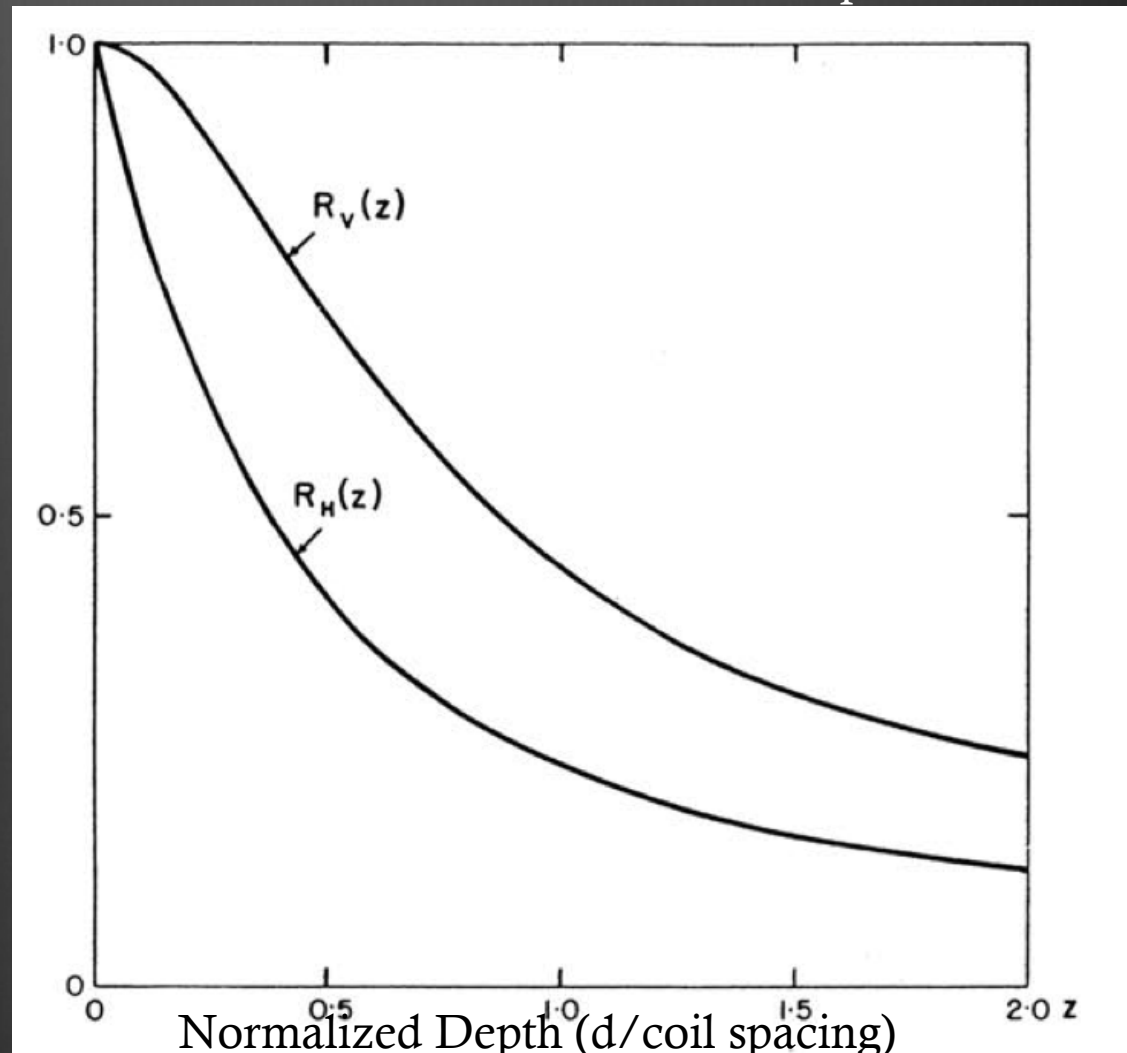


EM-31 Operation

Integrate depth response to get cumulative response



Contribution from all material below depth on x-axis



1.8

3.7

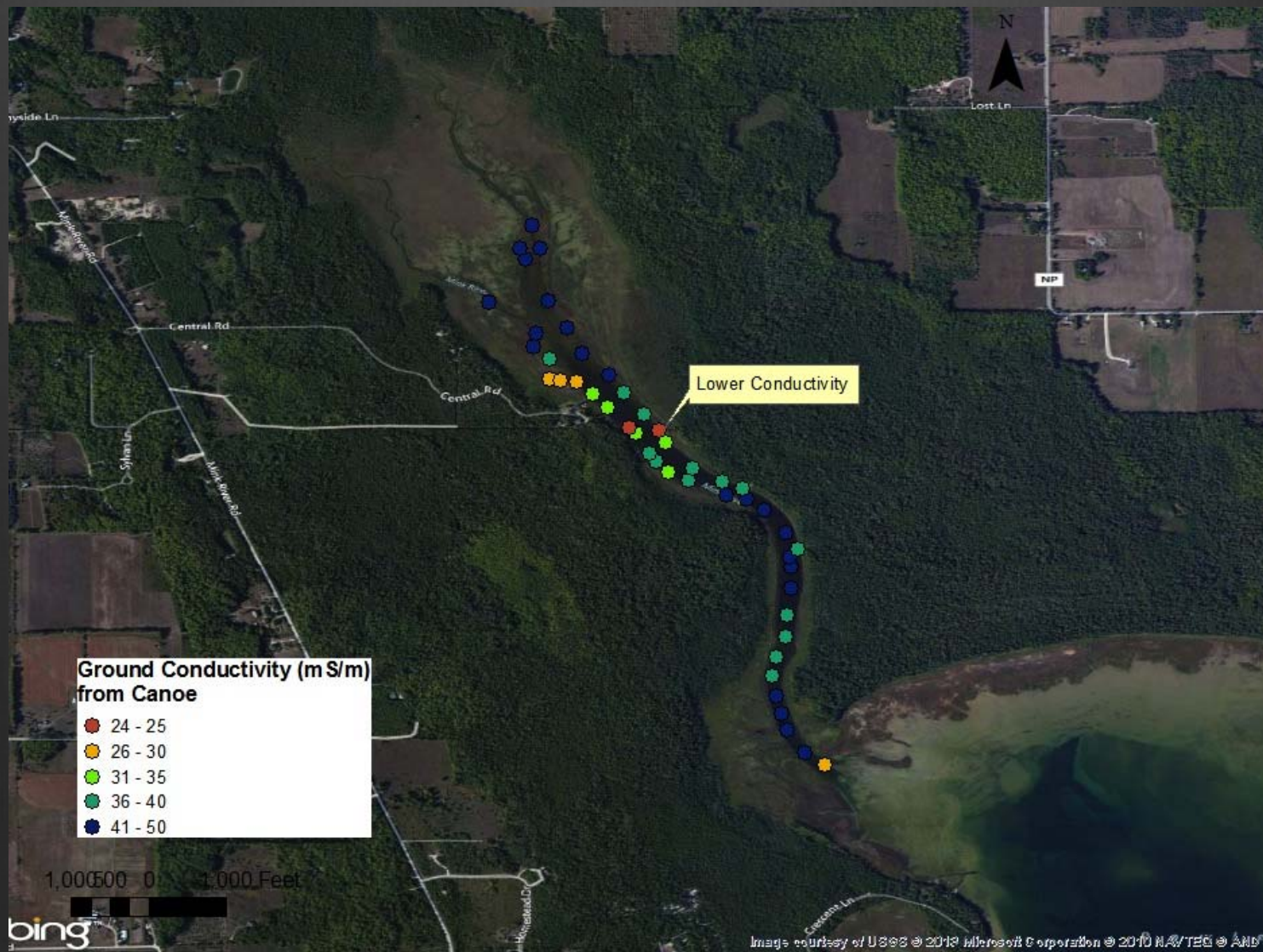
5.5

7.4 m

Taken from McNeill, 1980.

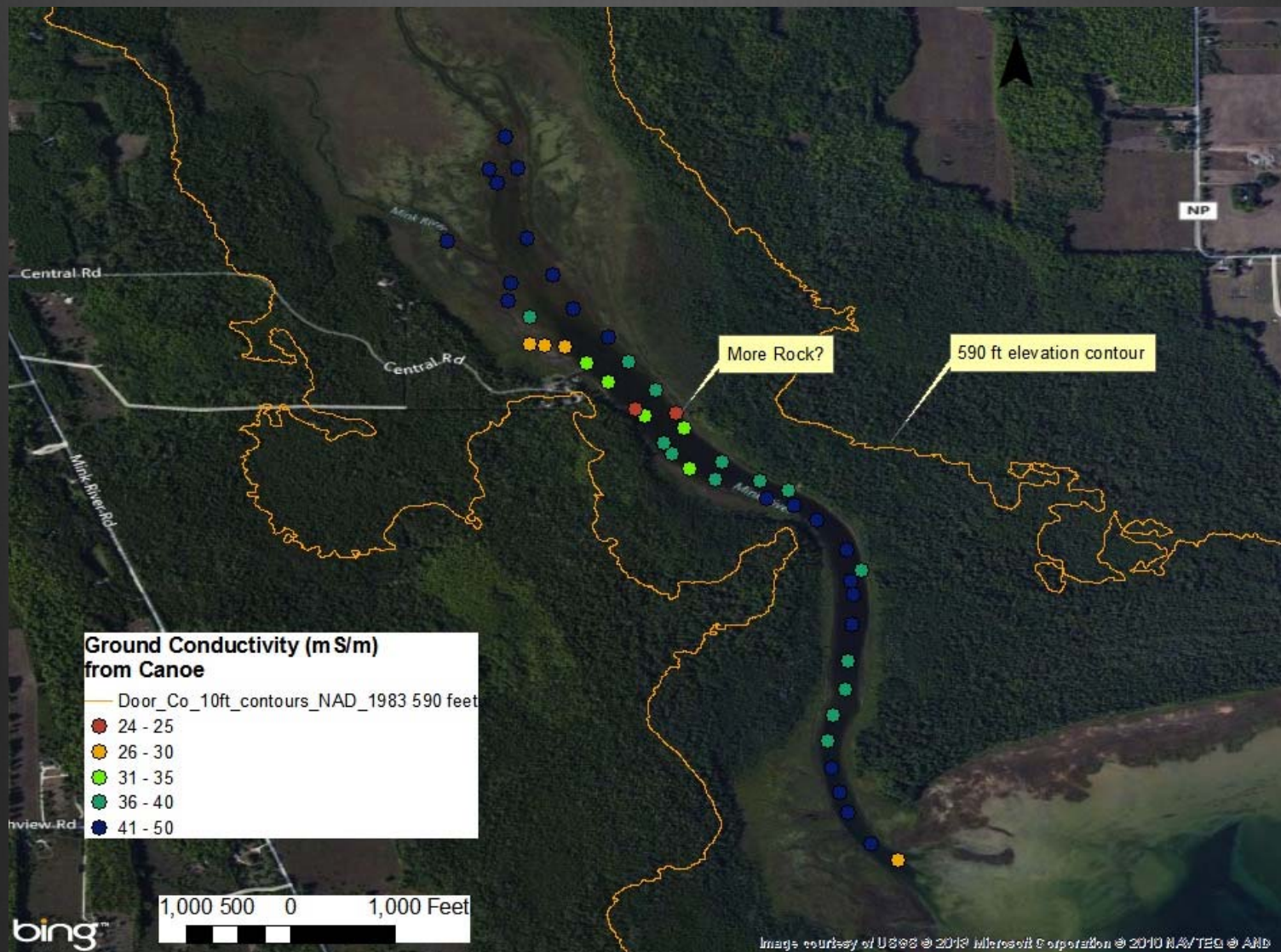
Results

EM31 data collected in canoe



Results

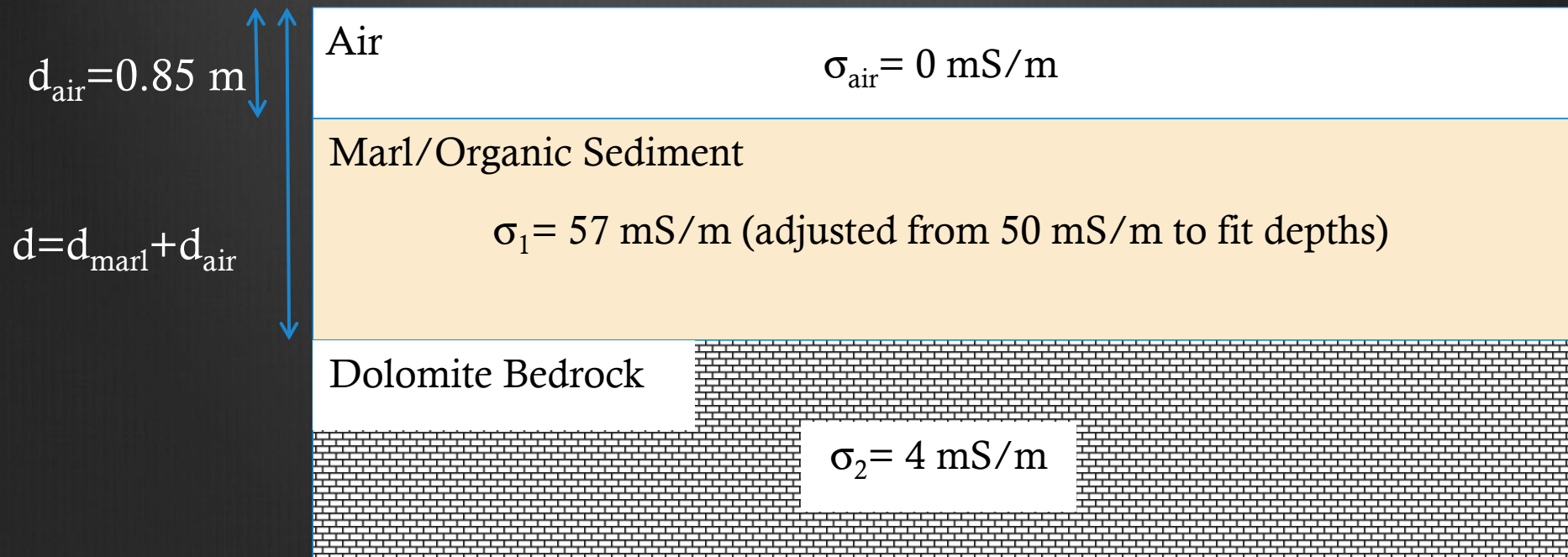
EM31 data collected in canoe



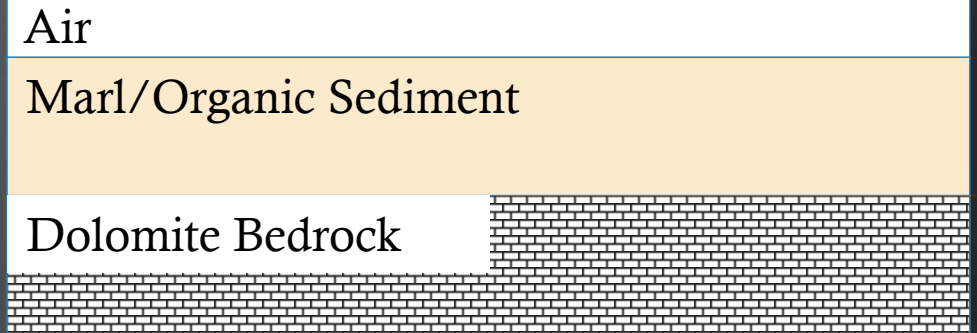
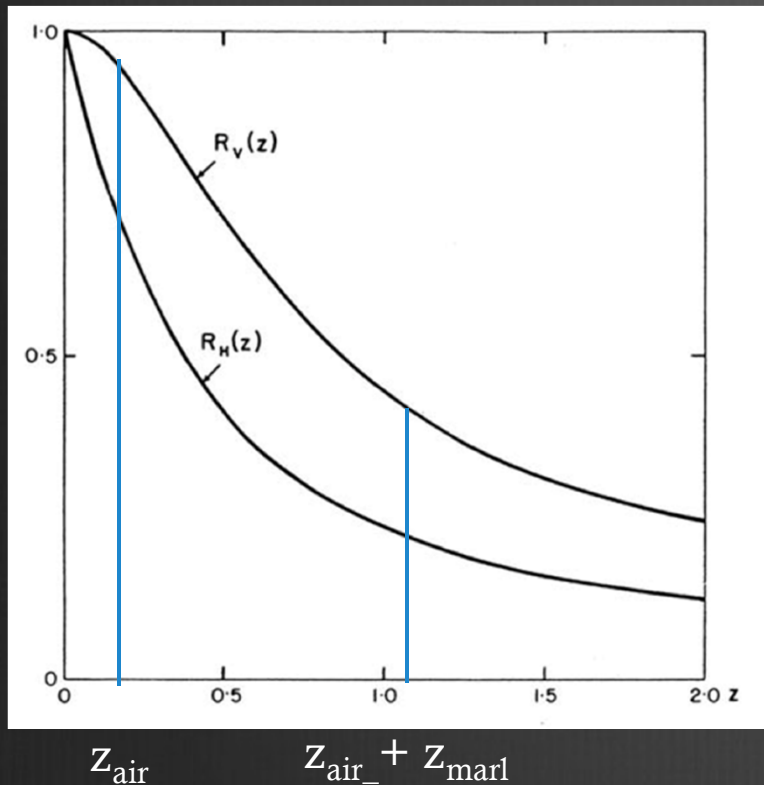
Three Layer System including air



Photo – Ken Bradbury



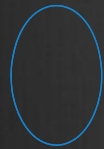
Three Layer System



$$\sigma_a = \sigma_{air} \left[1 - R_V(z_{air}) \right] + \sigma_1 \left[R_V(z_{air}) - R_V(z_{marl} + z_{air}) \right] + \sigma_2 R_V(z_{marl} + z_{air})$$

Three Layer System

$$\sigma_a = \sigma_{air} \left[1 - R_V(z_{air}) \right] + \sigma_1 \left[R_V(z_{air}) - R_V(z_{marl} + z_{air}) \right] + \sigma_2 R_V(z_{marl} + z_{air})$$



Measured by EM-31



Estimated and assumed from resistivity lines



Estimated instrument height for $z_{air} = d_{air} / \text{coil spacing}$;
 $R_V(z_{air})$ from graph of $R_V(z)$

$$R_V(z_{marl} + z_{air})$$

Only unknown left.

Do algebra to solve for $R_V(z_{marl} + z_{air})$.

Once known, then can find z_{marl}

and finally $z_{marl} \times \text{coil spacing of } 3.7 \text{ m} = d_{marl}$

**Depth to Bedrock
Estimated from EM31**

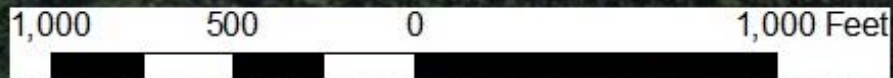
depth (ft)

- 1 - 2
- 3 - 5
- 6 - 10
- 11 - 15
- 16 - 20
- 21 - 30

● Peat_core_depth_rock

Poor Estimate
More peat, less marl
along creek

Poor Estimate
Wells show sand over dolomite



Conclusions

- EM-31 and ERI provided estimates of depth to bedrock over much of the wetland.
- GPR and EM-31 identified a ridge of low electrical conductivity perpendicular to the river channel.

Questions?